

I-90: SH-41 TO 15TH ST GENERAL NOTES

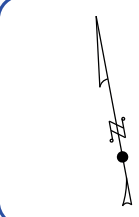
- 1) The alignment of I-90 is still in development but will remain in existing right of way.
- 2) Temporary easements may be needed to complete local road construction and will be identified during funded design projects.

PRELIMINARY

PRELIMINARY

PRELIMINARY

I-90 WIDENING: SH-41 TO US-95



SH-41 INTERCHANGE CURRENTLY IN CONSTRUCTION
WITH COMPLETION ANTICIPATED IN 2025

FOUR LANES FOR EB AND WB I-90.
WIDENING TO THE INSIDE.

LEGEND

- PROPOSED INTERSTATE I-90 EXPANSION CONSTRUCTION
- COLLECTOR DISTRIBUTOR ROAD
- INTERCHANGE RAMP
- CROSSROAD
- NEW STRUCTURE
- PAVED TRAIL CONSTRUCTED WITH THE PROJECT
- RETAINING WALL
- GUARDRAIL
- CONCRETE BARRIER
- SIDEWALK
- PROPOSED RIGHT-OF-WAY ACQUISITION (SUBJECT TO CHANGE AS DESIGN PROGRESSES)
TEMPORARY CONSTRUCTION EASEMENTS MAY BE NEEDED TO COMPLETE LOCAL ROAD IMPROVEMENTS AND WILL BE IDENTIFIED DURING FUNDED DESIGN PROJECTS.

100 0 100 200
Scale: 1" = 200'



SH-41 TO 15th STREET

PROJECT NO.
A022(293)

EXHIBIT
I-90, SH-41 TO 15TH ST IC
KOOTENAI COUNTY
I-90

CADD FILE NAME
22293 plan001.DGN
COUNTY
KOOTENAI
KEY NUMBER
22293

IDAHO
TRANSPORTATION
DEPARTMENT
YOUR Safety-YOUR Mobility-YOUR Economic Opportunity
DAVID EVANS
AND ASSOCIATES INC.
HORROCKS
ENGINEERS
Parametrix

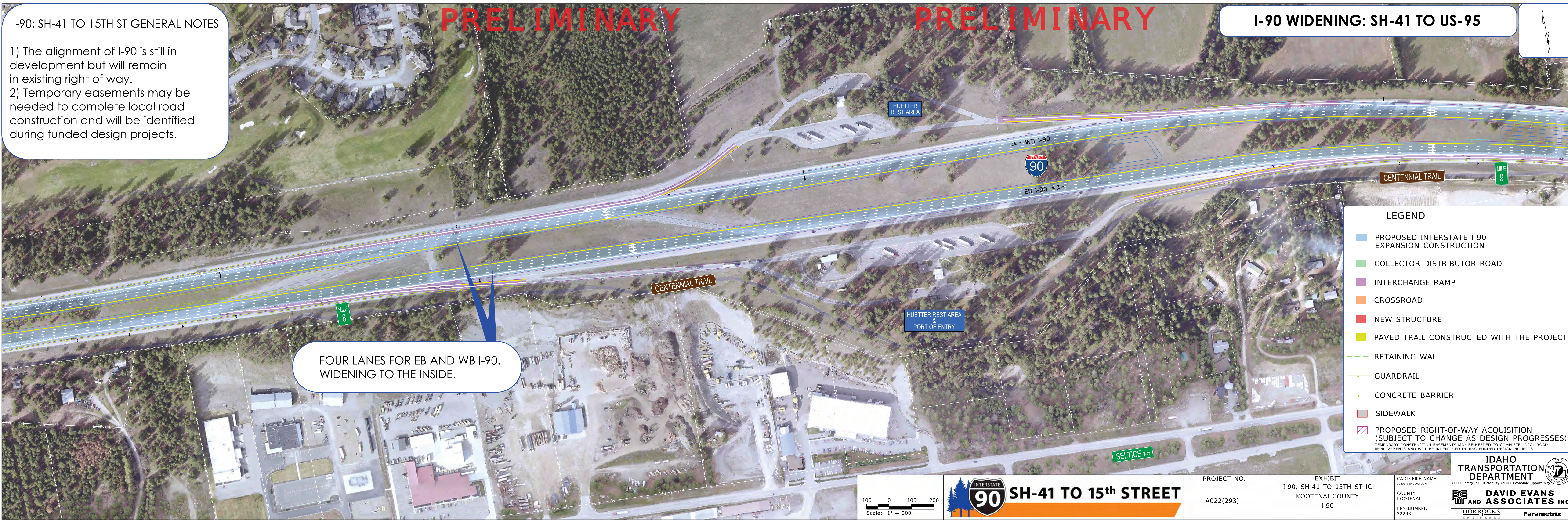
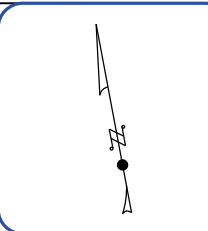
PRELIMINARY

PRELIMINARY

I-90: SH-41 TO 15TH ST GENERAL NOTES

- 1) The alignment of I-90 is still in development but will remain in existing right of way.
- 2) Temporary easements may be needed to complete local road construction and will be identified during funded design projects.

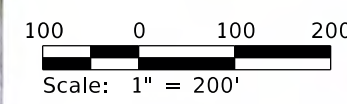
I-90 WIDENING: SH-41 TO US-95




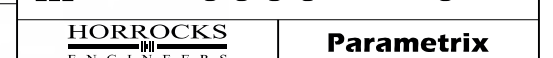
FOUR LANES FOR EB AND WB I-90.
WIDENING TO THE INSIDE.

LEGEND

- PROPOSED INTERSTATE I-90 EXPANSION CONSTRUCTION
- COLLECTOR DISTRIBUTOR ROAD
- INTERCHANGE RAMP
- CROSSROAD
- NEW STRUCTURE
- PAVED TRAIL CONSTRUCTED WITH THE PROJECT
- RETAINING WALL
- GUARDRAIL
- CONCRETE BARRIER
- SIDEWALK
- PROPOSED RIGHT-OF-WAY ACQUISITION (SUBJECT TO CHANGE AS DESIGN PROGRESSES)
TEMPORARY CONSTRUCTION EASEMENTS MAY BE NEEDED TO COMPLETE LOCAL ROAD IMPROVEMENTS AND WILL BE IDENTIFIED DURING FUNDED DESIGN PROJECTS.



**SH-41 TO 15th STREET**

PROJECT NO.	EXHIBIT	CADD FILE NAME	IDAHO TRANSPORTATION DEPARTMENT	
A022(293)	I-90, SH-41 TO 15TH ST IC KOOTENAI COUNTY I-90	22293 plan002.dgn	YOUR Safety-YOUR Mobility-YOUR Economic Opportunity	
		COUNTY KOOTENAI		
		KEY NUMBER 22293		

PRELIMINARY

PRELIMINARY

PRELIMINARY

I-90 WIDENING: SH-41 TO US-95



I-90 BRIDGES RAISED TO INCREASE CLEARNACE OVER HUETTER RD AND ALLOW FOR FUTURE HUETTER RD WIDENING

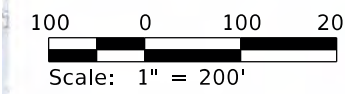
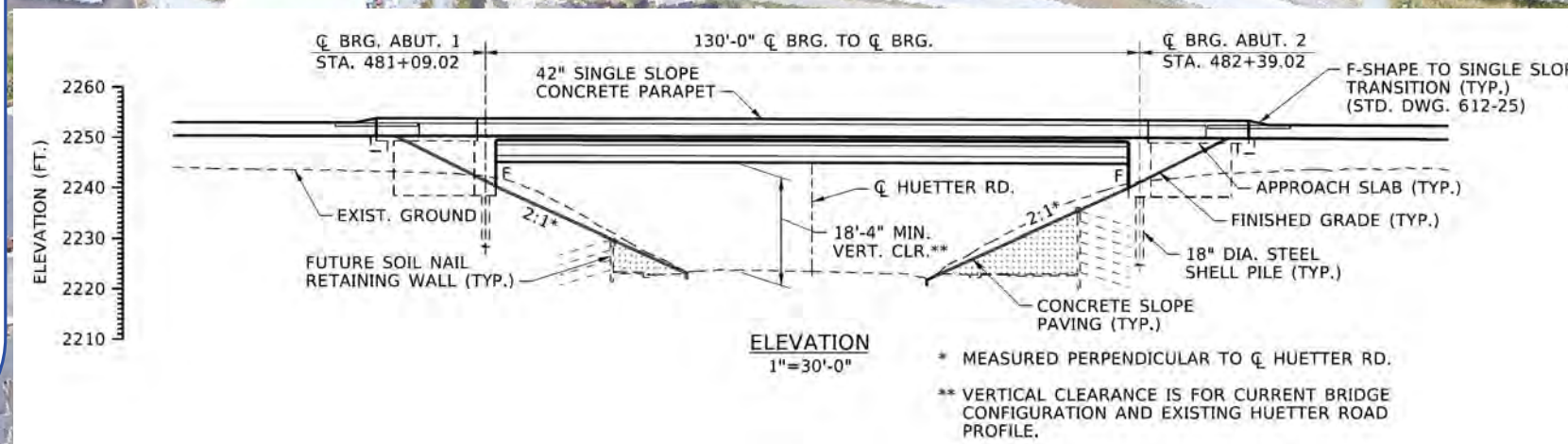
FOUR LANES FOR EB AND WB I-90. LANES MEET IN THE MIDDLE CONTINUE PAST 4TH STREET INTERCHANGE

LEGEND

- PROPOSED INTERSTATE I-90 EXPANSION CONSTRUCTION
- COLLECTOR DISTRIBUTOR ROAD
- INTERCHANGE RAMP
- CROSSROAD
- NEW STRUCTURE
- PAVED TRAIL CONSTRUCTED WITH THE PROJECT
- RETAINING WALL
- GUARDRAIL
- CONCRETE BARRIER
- SIDEWALK
- PROPOSED RIGHT-OF-WAY ACQUISITION (SUBJECT TO CHANGE AS DESIGN PROGRESSES)
TEMPORARY CONSTRUCTION EASEMENTS MAY BE NEEDED TO COMPLETE LOCAL ROAD IMPROVEMENTS AND WILL BE IDENTIFIED DURING FUNDED DESIGN PROJECTS.

I-90: SH-41 TO 15TH ST GENERAL NOTES

- 1) The alignment of I-90 is still in development but will remain in existing right of way.
- 2) Temporary easements may be needed to complete local road construction and will be identified during funded design projects.



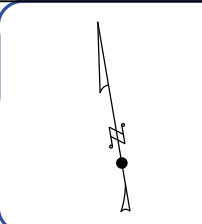
SH-41 TO 15th STREET

PROJECT NO.	EXHIBIT	CADD FILE NAME
A022(293)	I-90, SH-41 TO 15TH ST IC KOOTENAI COUNTY I-90	22293 plan003.DGN
		COUNTY KOOTENAI
		KEY NUMBER 22293
		IDAHO TRANSPORTATION DEPARTMENT YOUR Safety-YOUR Mobility-YOUR Economic Opportunity
		DAVID EVANS AND ASSOCIATES INC.
		HORROCKS ENGINEERS
		Parametrix

PRELIMINARY

PRELIMINARY

I-90 WIDENING: SH-41 TO US-95



FOUR LANES FOR EB AND WB I-90.
LANES MEET IN THE MIDDLE CONTINUE
PAST 4TH STREET INTERCHANGE

TWO LANE ENTRANCE RAMP

LEGEND

- PROPOSED INTERSTATE I-90 EXPANSION CONSTRUCTION
- COLLECTOR DISTRIBUTOR ROAD
- INTERCHANGE RAMP
- CROSSROAD
- NEW STRUCTURE
- PAVED TRAIL CONSTRUCTED WITH THE PROJECT
- RETAINING WALL
- GUARDRAIL
- CONCRETE BARRIER
- SIDEWALK
- PROPOSED RIGHT-OF-WAY ACQUISITION (SUBJECT TO CHANGE AS DESIGN PROGRESSES)
TEMPORARY CONSTRUCTION EASEMENTS MAY BE NEEDED TO COMPLETE LOCAL ROAD IMPROVEMENTS AND WILL BE IDENTIFIED DURING FUNDED DESIGN PROJECTS.

I-90: SH-41 TO US-95 GENERAL NOTES

- 1) The alignment of I-90 is still in development but will remain in existing right of way.
- 2) Temporary easements may be needed to complete local road construction and will be identified during funded design projects.

CENTENNIAL TRAIL
REALIGNED

ONE ADDITIONAL THROUGH/RIGHT TURN
LANE IS ADDED FOR TH EINTERIM PHASE

100 0 100 200
Scale: 1" = 200'



SH-41 TO 15th STREET

PROJECT NO.

A022(293)

EXHIBIT

I-90, SH-41 TO 15TH ST IC
KOOTENAI COUNTY
I-90

CADD FILE NAME

23607 plan001.dgn

COUNTY

KOOTENAI

KEY NUMBER

22293

IDAHO
TRANSPORTATION
DEPARTMENT
YOUR Safety-YOUR Mobility-YOUR Economic Opportunity

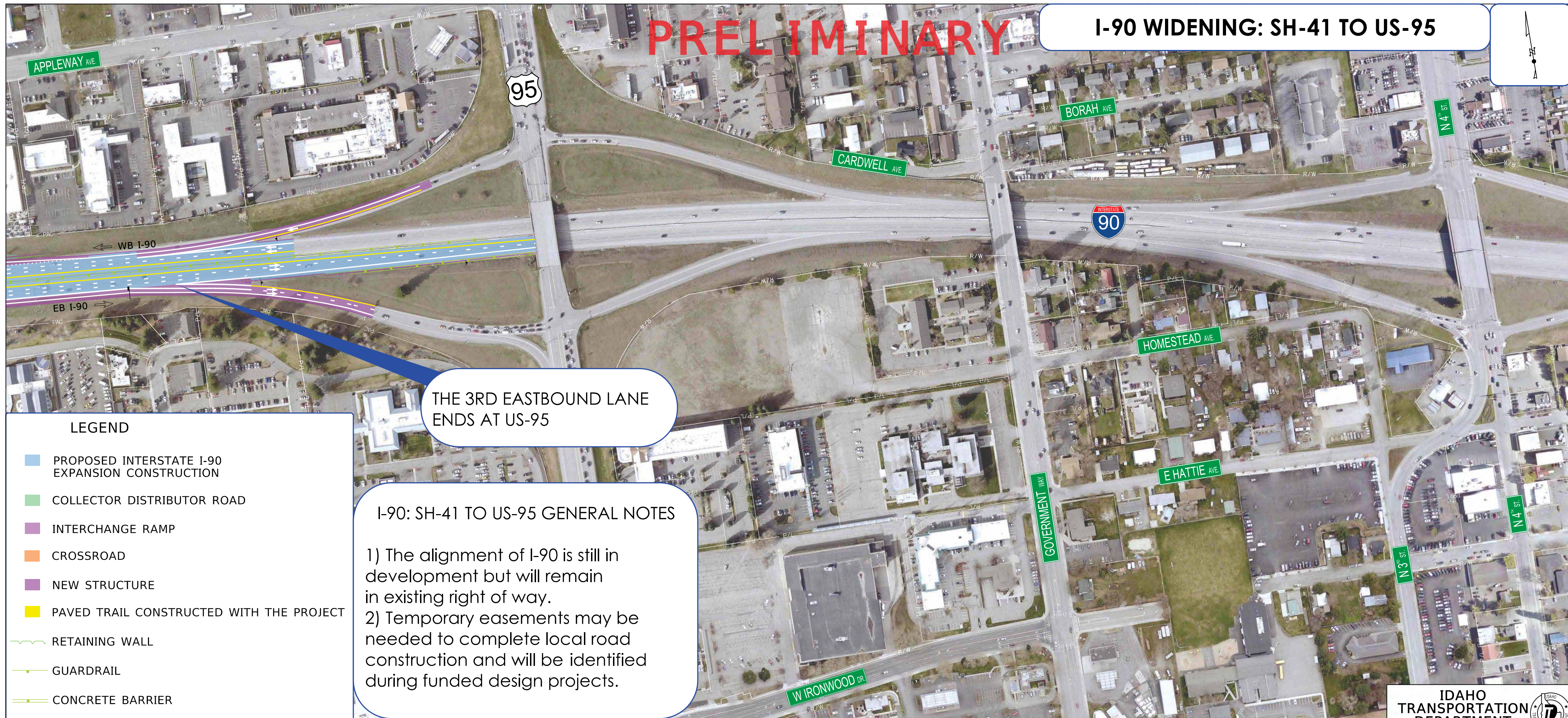
**DAVID EVANS
AND ASSOCIATES INC.**

**HORROCKS
ENGINEERS**

Parametrix

PRELIMINARY

I-90 WIDENING: SH-41 TO US-95



THE 3RD EASTBOUND LANE
ENDS AT US-95

I-90: SH-41 TO US-95 GENERAL NOTES

- 1) The alignment of I-90 is still in development but will remain in existing right of way.
- 2) Temporary easements may be needed to complete local road construction and will be identified during funded design projects.

LEGEND

- PROPOSED INTERSTATE I-90 EXPANSION CONSTRUCTION
- COLLECTOR DISTRIBUTOR ROAD
- INTERCHANGE RAMP
- CROSSROAD
- NEW STRUCTURE
- PAVED TRAIL CONSTRUCTED WITH THE PROJECT
- RETAINING WALL
- GUARDRAIL
- CONCRETE BARRIER
- SIDEWALK
- PROPOSED RIGHT-OF-WAY ACQUISITION (SUBJECT TO CHANGE AS DESIGN PROGRESSES)
TEMPORARY CONSTRUCTION EASEMENTS MAY BE NEEDED TO COMPLETE LOCAL ROAD IMPROVEMENTS AND WILL BE IDENTIFIED DURING FUNDED DESIGN PROJECTS.



SH-41 TO 15th STREET

PROJECT NO.	EXHIBIT	CADD FILE NAME	IDAHO TRANSPORTATION DEPARTMENT <small>YOUR Safety--YOUR Mobility--YOUR Economic Opportunity</small>
A022(293)	I-90, SH-41 TO 15TH ST IC KOOTENAI COUNTY I-90	23607 plan002.DGN	
		KEY NUMBER 22293	
			DAVID EVANS AND ASSOCIATES INC.
			HORROCKS ENGINEERS
			Parametrix